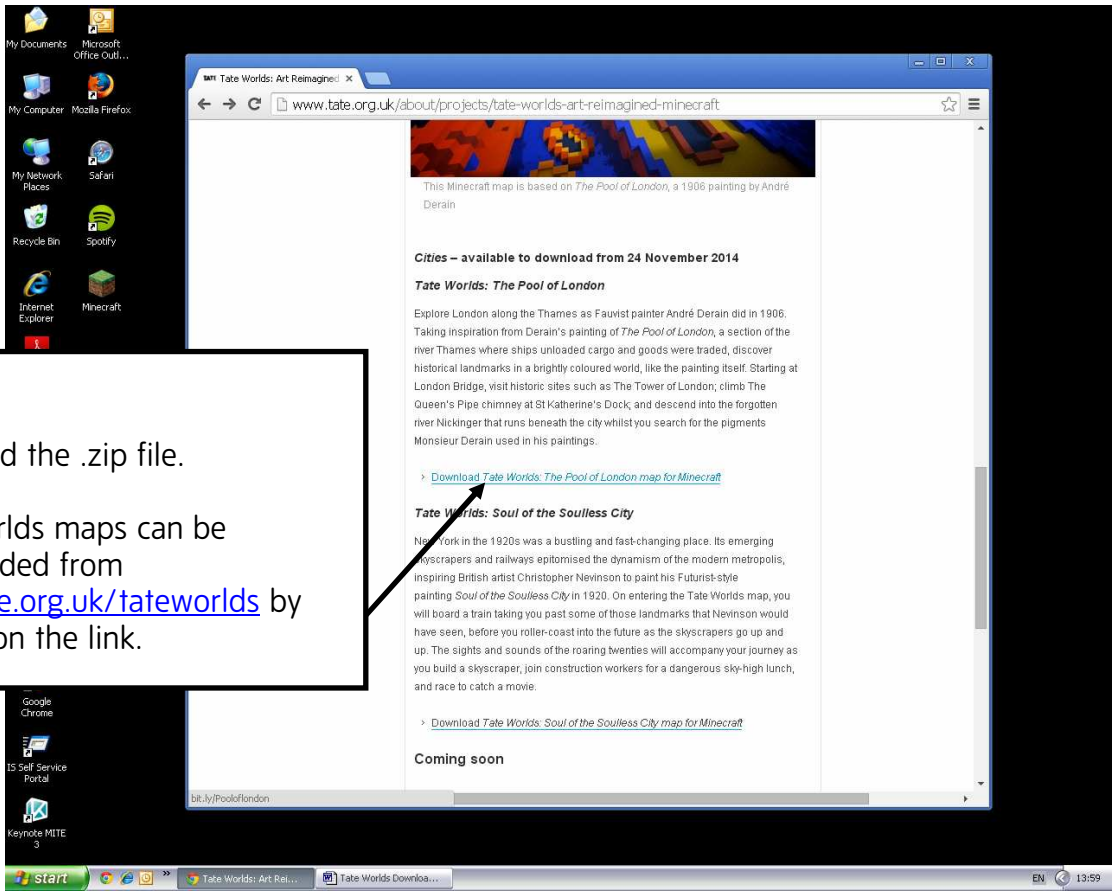
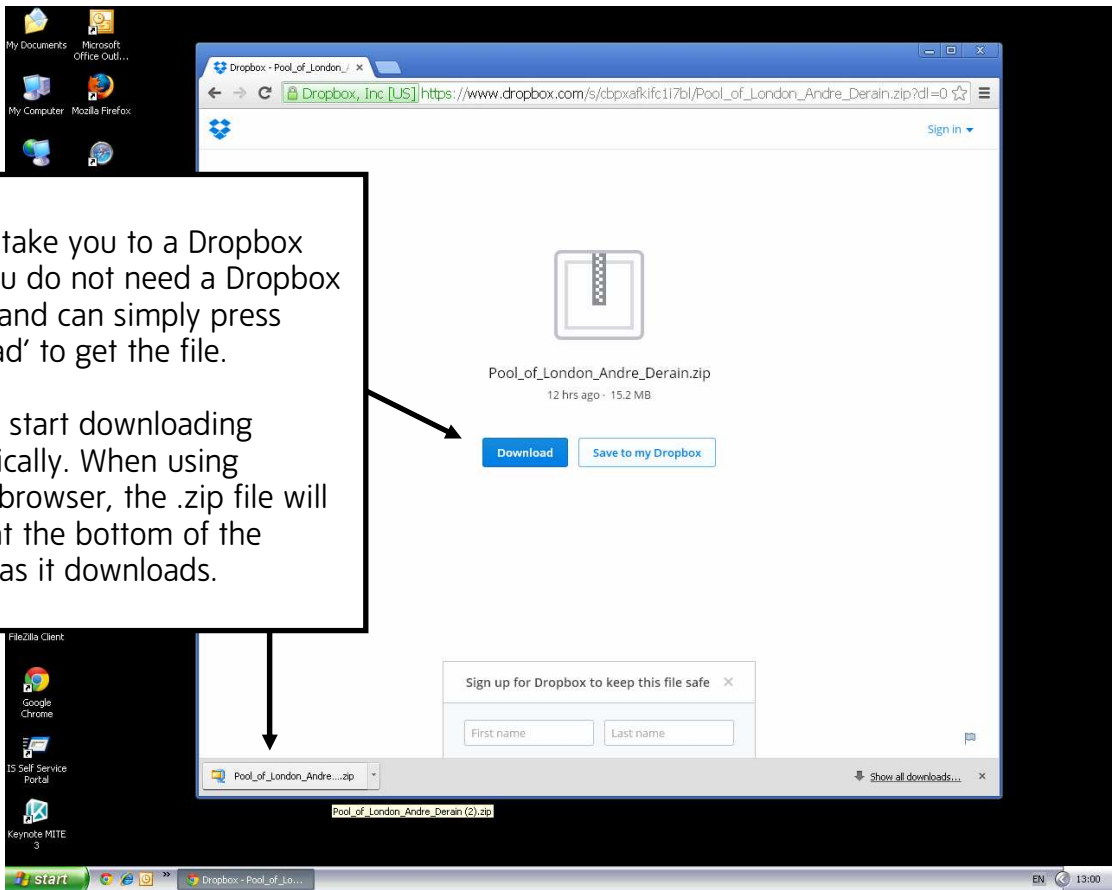


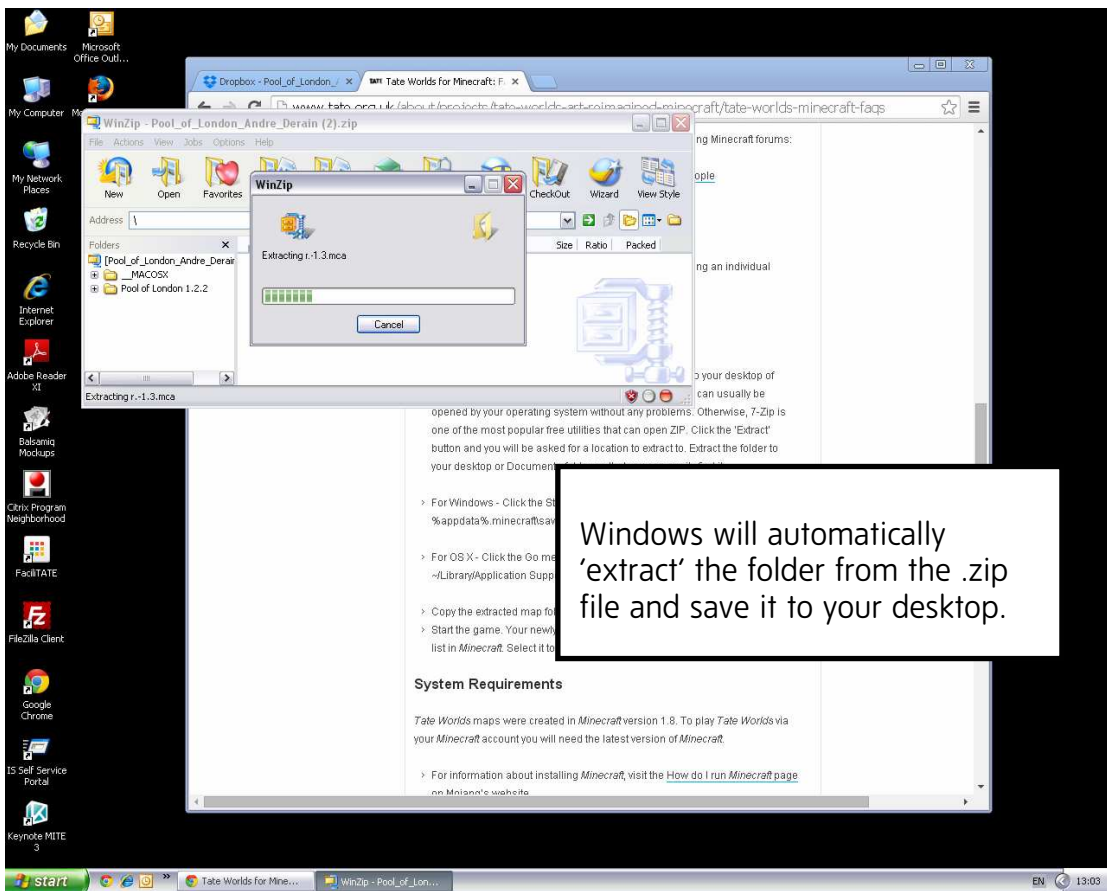
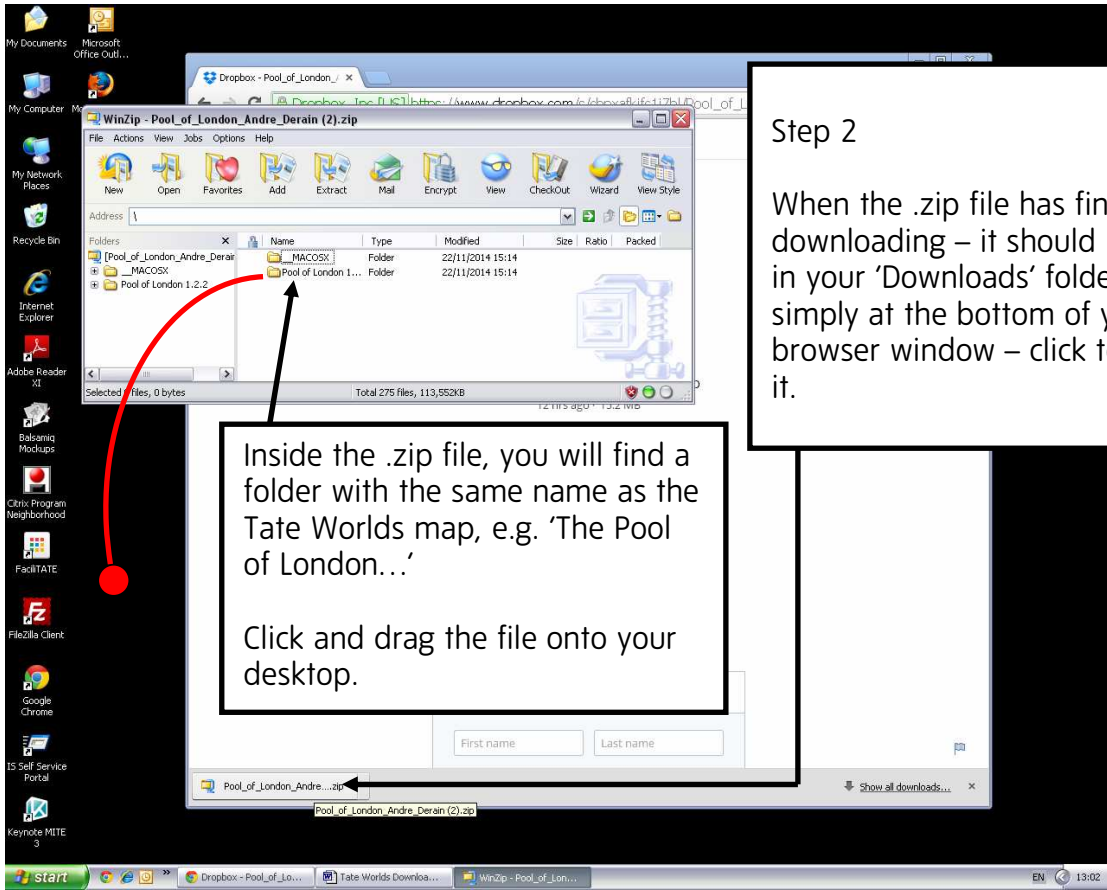
How to download and install a Tate Worlds map in Minecraft (For Windows)

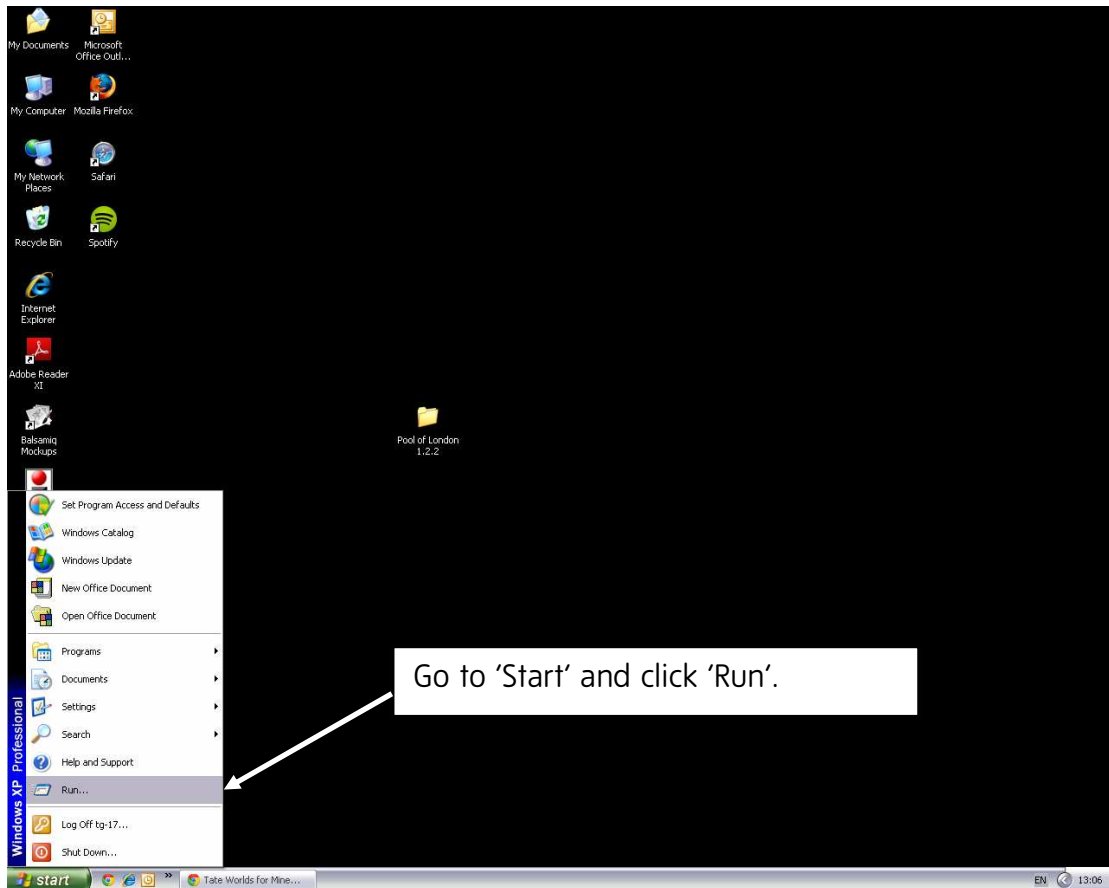
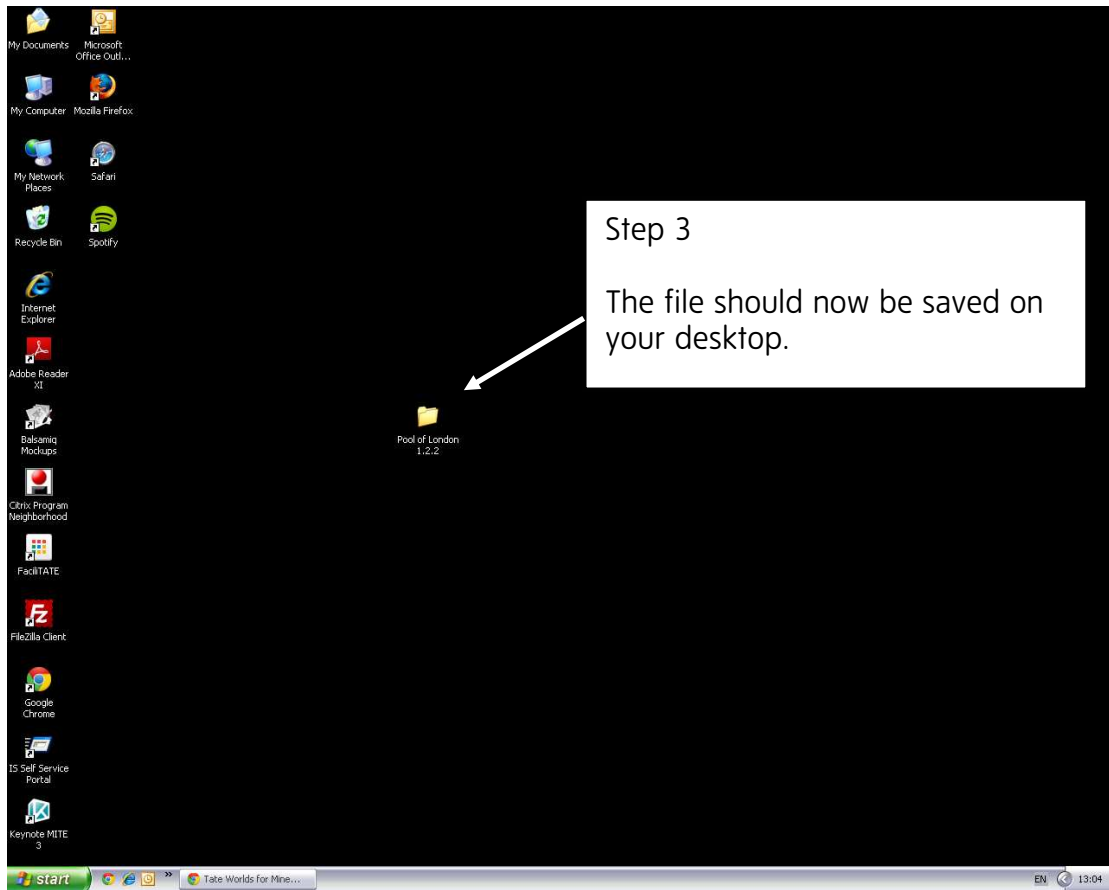
Step 1
Download the .zip file.
Tate Worlds maps can be downloaded from www.tate.org.uk/tateworlds by clicking on the link.

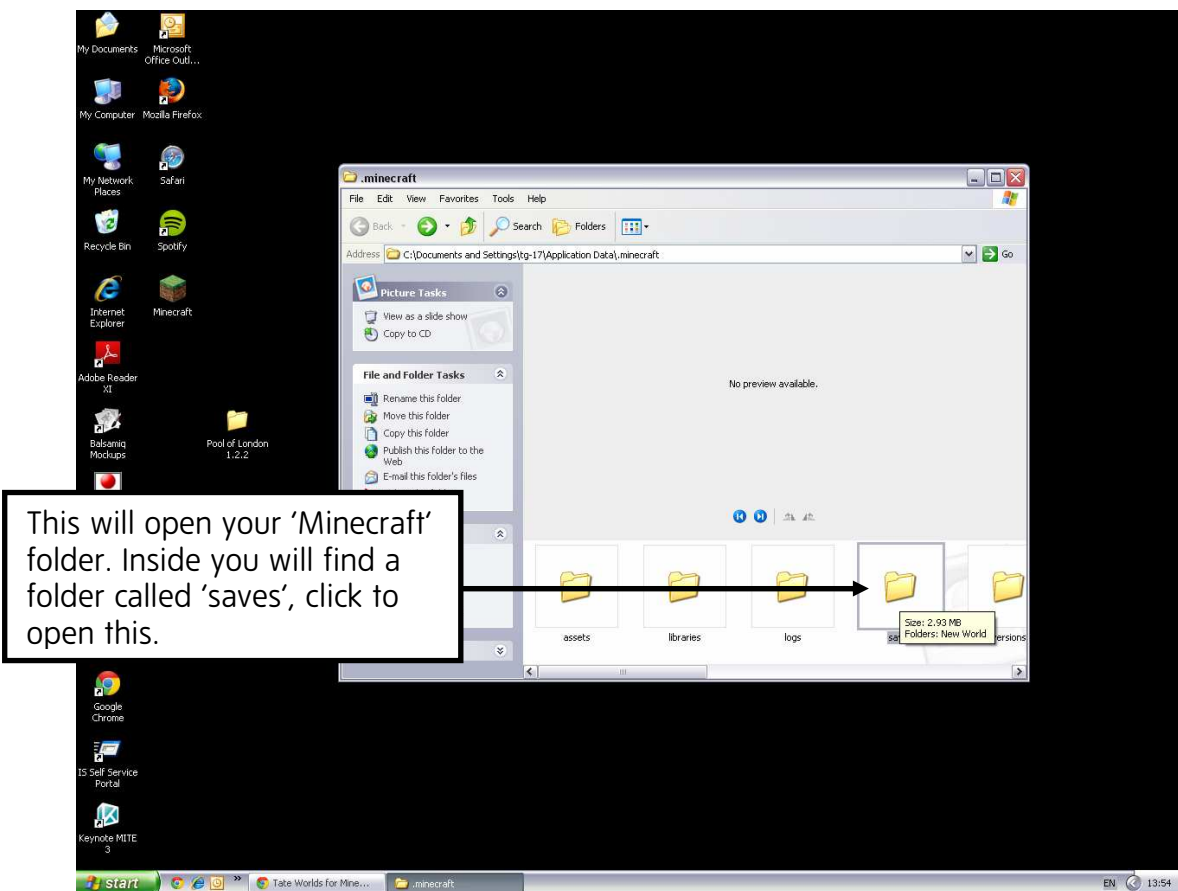
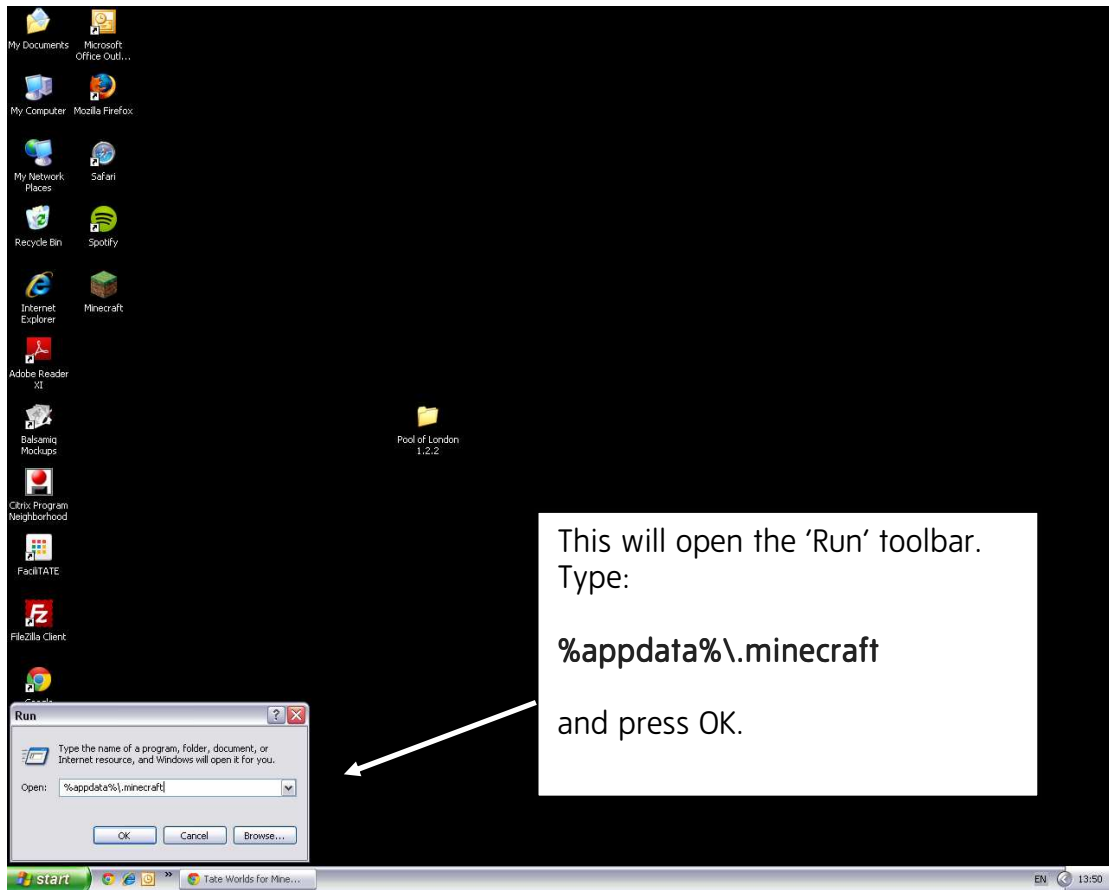


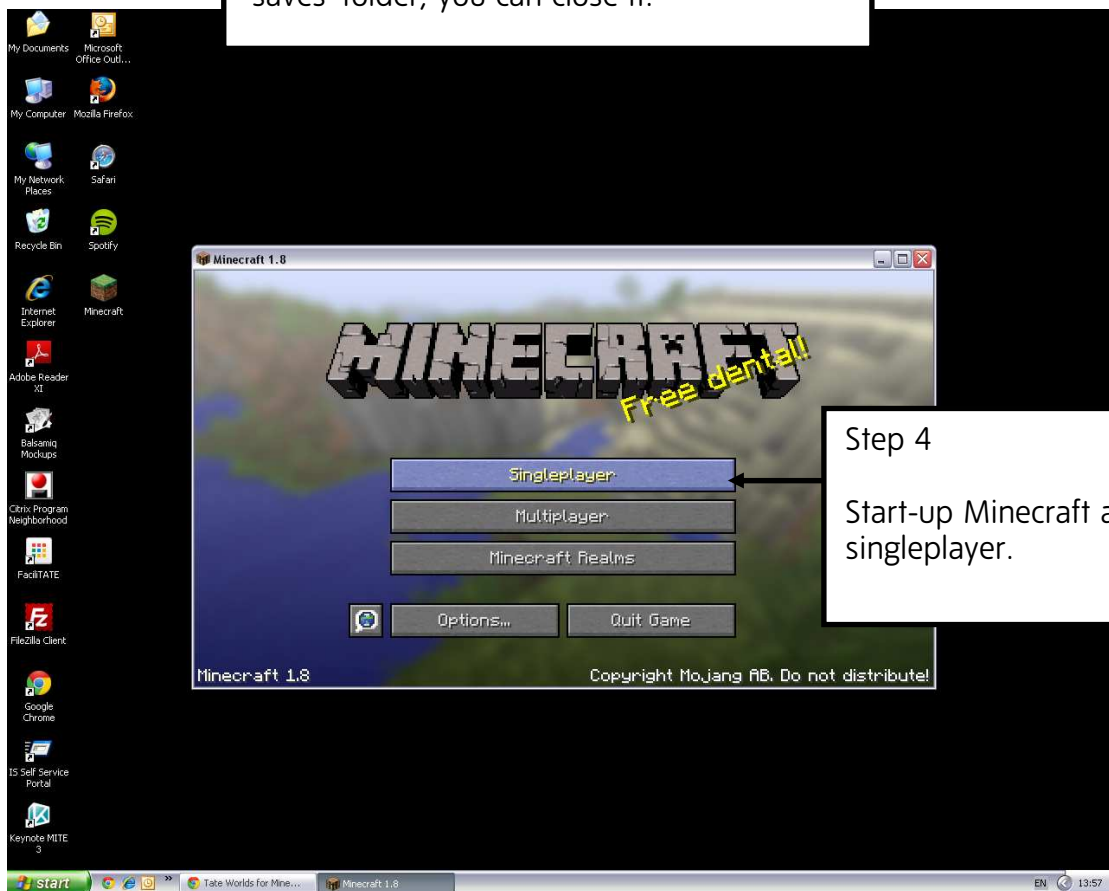
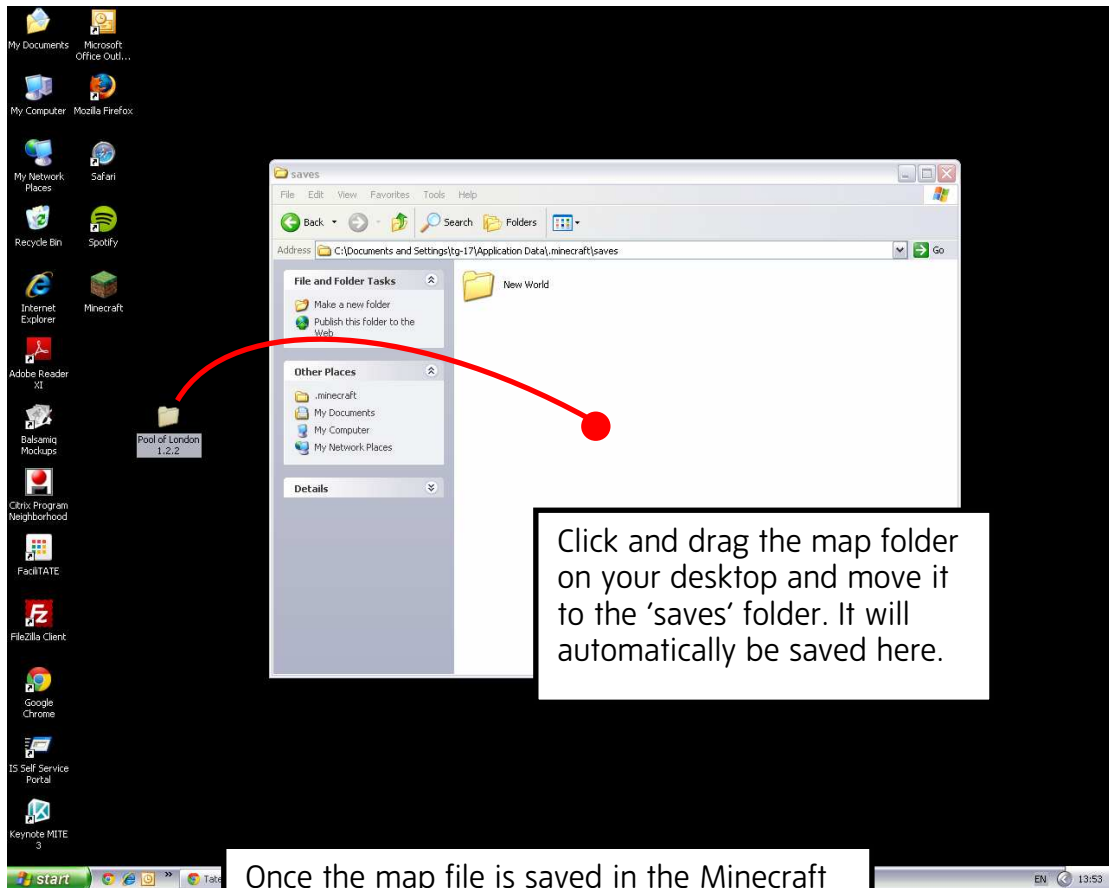
This will take you to a Dropbox page. You do not need a Dropbox account and can simply press 'download' to get the file.
It should start downloading automatically. When using Chrome browser, the .zip file will appear at the bottom of the window as it downloads.

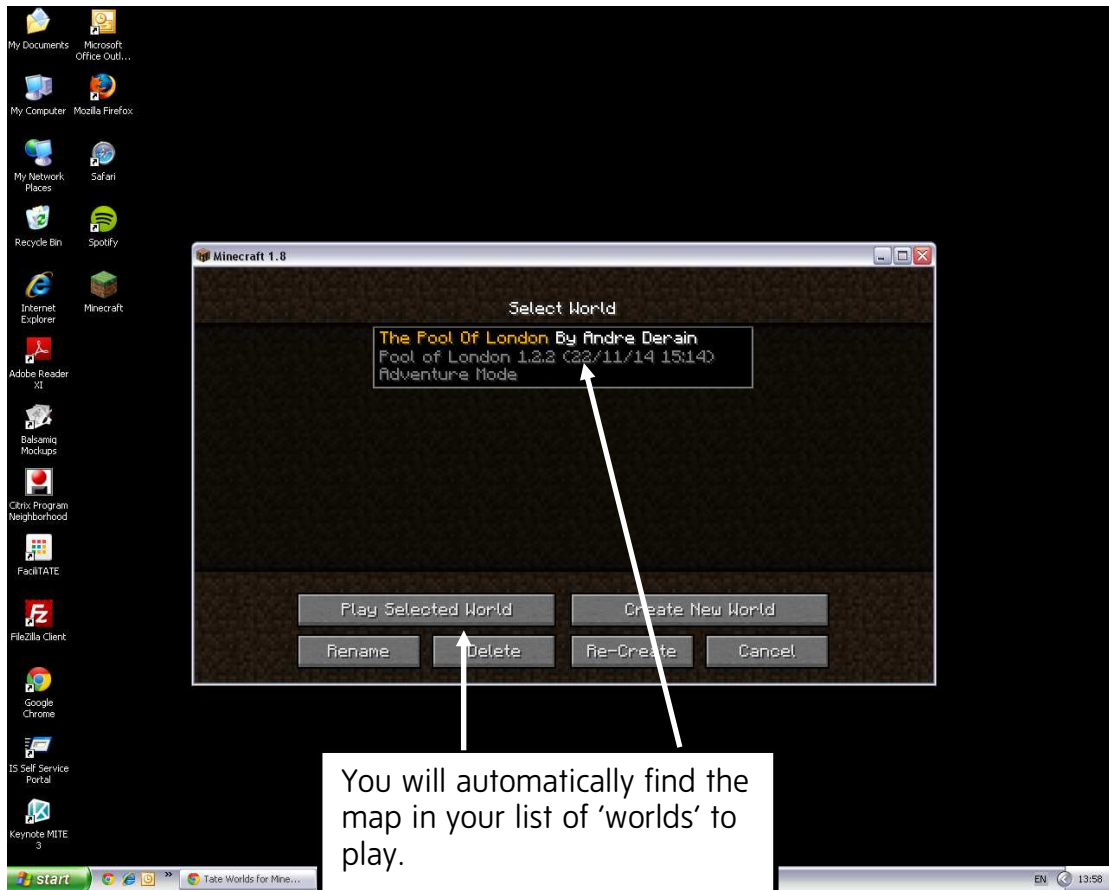












You will automatically find the map in your list of 'worlds' to play.

Select the Tate Worlds map by clicking on it, then click 'Play Selected World' to start playing.